

Network Cognition

Roberta Dessi*, Edoardo Gallo[†] and Sanjeev Goyal^{‡§}

November 2012

Abstract

We study individual ability to memorize and recall information about friendship networks using a combination of experiments and survey-based data. In the experiment subjects are shown a network, in which their location is exogenously assigned, and they are then asked questions about the network after it disappears. We find that subjects exhibit three main cognitive biases: *(i)* they underestimate the mean degree compared to the actual network; *(ii)* they overestimate the number of rare degrees; *(iii)* they underestimate the number of frequent degrees. We then analyze survey data from two ‘real’ friendship networks from a Silicon Valley firm and from a University Research Center. We find, somewhat remarkably, that individuals in these real networks also exhibit these biases.

The experiments yield three further findings: *(iv)* network cognition is affected by the subject’s location, *(v)* the accuracy of network cognition varies with the nature of the network, and *(vi)* network cognition has a significant effect on economic decisions.

*Toulouse School of Economics (IDEI and GREMAQ), and CEPR; email: roberta.dessi@tse-fr.eu

[†]Address: University of Cambridge and Queens’ College; email: edo@econ.cam.ac.uk.

[‡]Faculty of Economic and Christ’s College, University of Cambridge; email: sg472@cam.ac.uk

[§]We thank Tiziana Casciaro for making the data on social networks from her research work available to us. We thank Olivier Darmouni, Peter Schwardmann and James Tremewan for excellent research assistance. We thank Antonio Cabrales, Gary Charness, Andrea Galeotti, Margaret Meyer, Werner Raub, Patrick Rey, Robert Sugden, Christophe Vanberg and seminar/conference participants at Cambridge, the ESF Workshop on Information and Behavior in Networks (Oxford), BEE Workshop (Lyon), the Workshop on Social Networks and Economics (Microsoft Research, Cambridge), the WIN Conference (NYU) and UEA. Financial support from the TSE Fondation Jean-Jacques Laffont Seed Funding Programme is gratefully acknowledged.

1 Introduction

A growing body of theoretical and empirical research argues that the structure of social networks is a crucial determinant of individual behavior and welfare.¹ In light of the recent development of social networking sites and tools, individuals have arguably become even more aware of the structure of the social relationships in which they are embedded.² However, learning and using information about network structure is far from being a simple task. A salient feature of networks is their complexity: there are thousands of potential network configurations even in a group with just a dozen members. Moreover, the nature of social interactions often makes it difficult to record or access information other than through memory, making this a cognitively demanding task.

The objective of this paper is to investigate individual cognition of social networks. Is there significant heterogeneity in the way individuals process, recall and use network information? Are there common systematic biases? Do they affect individuals' economic decisions? These are some of the questions we address. A distinctive feature of our work is that we use data drawn from a combination of laboratory experiments and surveys from the field. We examine the cognition of the distribution of connections (the so called 'degree' distribution) and how cognition varies with location in the network.³ Our focus on the distribution of connections is motivated by recent theoretical research highlighting its key role in understanding individual behavior and in investigating aggregate social and economic dynamics in networks.⁴

In the laboratory experiment, we use the following novel methodology: subjects are shown a graphical representation of an imaginary friendship network and they are (randomly) assigned to be a node in the network. After a fixed amount of time (typically 1 minute⁵), the network disappears and subjects are asked questions about the structure of friendship relations in the group. For instance, the question "*How many people in the group (including yourself) have exactly x friends?*" allows us to generate the subjects' perception of the degree distribution by aggregating the answers for the different values of x .

We find substantial individual heterogeneity in network cognition. However, three main biases emerge clearly. First, subjects *underestimate the average degree in the network*. The cognitive mean degree is (roughly) 4 while the actual mean degree is over 4.6.

¹See Goyal [2007], Jackson [2008] and Vega-Redondo [2007] for overviews of this work.

²In a special report, the *Economist* magazine asserts that "social-networking sites [...] have made people's personal relationships more visible and quantifiable than ever before" ("A world of connections," *The Economist*, January 28, 2010).

³The *degree* of a node is the number of its direct connections. The degree distribution in a network tells us the number of nodes with different degrees. For formal definitions refer to section 2.

⁴See Galeotti et al. [2010] for a study of the relationship between network degree distributions and strategic behavior, and Vega-Redondo [2007] for an exposition of the literature which relates a variety of dynamic processes in networks to the underlying degree distribution.

⁵We decided to allocate one minute for most experiments after obtaining feedback from a pilot.

Second, subjects *overestimate the number of rare types* in the network, where the "type" of a node is its degree. Specifically, they perceive that there exist individuals of types 1, 2, 5, 6, and 8, which are actually absent from the real network. Third, they *underestimate the number of frequent types in the network*: there are five nodes for each of types 3, 4 and 7 and subjects perceive a significantly lower number.

The laboratory setting allows a researcher to control the parameters of the experiment, but this tight control raises questions about the scope of the findings. The first issue is internal validation: are our findings sensitive to the specific networks used and the particular visualizations of the chosen networks? The second issue is external validation: do these biases also arise in actual social networks or are they an artifact of the experimental methodology? We address these concerns by analyzing two well-known survey data sets on social networks. The first data set is the friendship network of a Silicon Valley firm, which was first studied in Krackhardt [1987]. The second data set is the friendship network in a University Research Center, which was first studied in Casciaro [1998].

We show that individual cognition of the real friendship networks in these two data sets exhibits the three main biases identified in our experimental work. In particular, individuals in the Silicon Valley firm network perceive a lower mean connectivity than the true mean, they overestimate rare types and underestimate (almost all) frequent types. Individuals in the University Research Center network perceive a lower mean connectivity than the true mean, they overestimate (most) rare types and underestimate (most) frequent types. This congruence of findings from our experiment and from the field data is, in our view, quite striking. It provides corroborating evidence of the existence of the specific cognitive biases that we identified in the laboratory experiments. Moreover, it allows us to make a more general methodological point: the network cognition processes in the laboratory appear to be similar to the cognition processes of individuals located in actual social networks.

The laboratory methodology enables us to make three important additional contributions relative to the analysis of survey data. First, we are able to investigate in a clean way location effects: by randomly assigning subjects to different nodes in the network, we can avoid the endogeneity problems typically present in survey data. We find that indeed *location affects cognition*: low and high "type" (degree) subjects differ in their perception of the network along a number of dimensions, such as perception of other low types, the identity of key individuals in the network, and the dispersion of the perceived mean degree. Second, we are able to study whether the *accuracy of network cognition varies with the architecture of the network*: we find that a mean preserving spread of the degree distribution leads to greater cognitive accuracy.⁶ Third, we are able to investigate whether *network cognition affects subjects' economic decisions*. Having answered a range of questions designed to probe how they process and recall network information, our subjects then face two decision problems. Both involve a decision to contribute in a network

⁶For formal definitions see section 2.

public good game, where other players' contribution decisions are assigned by the experimenter and communicated to the subject, thereby removing any strategic uncertainty. The subject therefore faces what would be a very simple decision problem if she had complete knowledge of the network: in one problem, the payoff-maximizing strategy is to contribute, while in the other it is more profitable not to contribute. However, the subject does not have access to network information while making her decision: she has to rely on her memory. The memory task is more demanding in one of the decision problems. We find, as expected, that in this case subjects are less likely to choose the action that maximizes their monetary payoff. Moreover, two measures of an individual's cognitive accuracy obtained in the earlier part of the experiment significantly predict behavior. The first is a measure of how accurately the individual perceives very low (degree) types in the network. This is particularly relevant for one of the decision problems, and indeed its effect is only significant for that problem. The second measures one of the cognitive biases we identified earlier, namely the tendency to overestimate the number of rare types in the network. This bias appears to increase the probability of contribution to the public good in *both* problems, suggesting that subjects with a very inaccurate perception of the network are unable to pick the payoff-maximizing strategy.

The remaining part of this section surveys the related literature. Section 2 introduces basic concepts on networks and explains the design of the experiment. Section 3 presents the main results of the laboratory experiment. Section 4 presents the results of the analysis of the survey-based data sets. Section 5 presents further results from the laboratory experiments. Section 6 concludes. Appendix A contains the instructions which were shown to the subjects participating in the experiment, and Appendix B contains all the network images which were displayed to subjects in the various treatments.

1.1 Literature review

The study of network cognition is still a largely unexplored area and, to the best of our knowledge, the present paper is the first in economics to study network cognition. So we see it as a stepping stone to further experimental/empirical work which can be used to assess existing theory and also as an input to formulate more realistic assumptions on network cognition in theoretical models.⁷

In the psychology and behavioral economics literature there has been a sustained interest in the calibration of probabilities. Early contributions include Alpert and Raiffa [1969/1982]; for a survey see Tversky and Kahneman [1982]. This research elicits individuals' confidence intervals for quantities they do not know. The findings suggest that confidence intervals are too narrow, implying that subjective probability distributions are too 'tight': individuals assign relatively too much weight to 'middle' values and too

⁷Existing experimental work on networks in economics typically provides subjects with specific network information; for an interesting recent paper in this tradition, see Charness et al. [2011].

little weight to values at the ‘periphery’ of the distribution. Our work has two novel features in relation to this body of work. First, we study distributions in the context of networks. Second, we find that individuals exhibit three specific biases: underestimation of the mean number of connections, overestimation of rare types and underestimation of frequent types.⁸

In a series of influential contributions, Robin Dunbar and his collaborators (see Dunbar [1998]) have proposed and empirically studied the “social brain hypothesis”: a specific part of the brain (the neocortex) deals with processing and synthesizing information on social relationships, and therefore the volume of the neocortex is a constraint on the maximum group size. Several empirical studies on both humans and different primate species support the social brain hypothesis (see Dunbar [2003] for a comprehensive review). This work has received wide attention, and the approximate threshold of 150 for group size for humans is popularly known as “Dunbar’s number.” Our work shares Dunbar’s research premise that there are cognitive constraints in individuals’ ability to process and recall information about human relationships. However, we focus on the consequences of these constraints for individuals’ perception of the structure of their social environment, instead of Dunbar’s focus on the consequences for the size of social groups.

In social psychology there is an active research programme on the study of network cognition using a survey-based methodology (see Moreno [1960], Newcomb [1961], Roethlisberger and Dickson [1939] and Krackhardt [1987].) In recent years, Kumbasar et al. [1994], Krackhardt and Kilduff [1999], Casciaro [1998], Smith et al. [2011], and others have used this methodology to identify a variety of cognitive biases in network perception. There are three main differences between this literature and our work. The first difference is about the object of study: their work focuses on the cognition of specific ties, while we study the degree distribution which is a statistic about the whole network. The second difference concerns methodology: existing work has, with a few exceptions, used only surveys of real networks, while our primary source of data comes from a laboratory experiment. The laboratory setting allows an unambiguous identification of the effects of network location on cognition, which is not typically possible using only survey data. We then exploit the methodological complementarity between survey based work and the experimental approach by re-analyzing the data from two surveys, from Krackhardt [1987] and Casciaro [1998], to validate our experimental work. The third difference is that we investigate the link between network cognition and economic decisions.

⁸There is a distinguished tradition of work on perception of distributions in the context of choice under uncertainty. Early work by Preston and Baratta [1948] suggested that individuals overestimate returns from gambles with low probability of success and underestimate returns from gambles with high probability of success. In prospect theory, these, and related observations, have been reconciled through the assignment of non-linear weights to probabilities of uncertain events. In particular, the evidence is consistent with low probabilities being assigned large weights and high probabilities being assigned small weights, see Kahneman and Tversky [1979] and Wakker [2010].

2 Set-up

Section 2.1 introduces some basic notation and definitions on networks. Section 2.2 describes the set-up of the experiments.

2.1 Basic notation

It is useful to briefly introduce some basic concepts and notation on networks. Let $N = \{1, 2, 3, \dots, n\}$ be a set of nodes; in our experiments, $n = 15$. Denote by $g_{ij} \in \{0, 1\}$ a friendship between two nodes i and j , so the variable g_{ij} takes on a value of 1 if there exists a friendship between i and j , and a value of 0 otherwise. The set of nodes taken along with the friendships between them defines a network denoted by g . Let $N_i(g) = \{j | g_{ij} = 1\}$ denote the nodes with whom node i shares a friendship relation; this set will be referred to as the *friends* of i . Let $\eta_i(g) = |N_i(g)|$ denote the *degree* of node i , which is the number of friends of node i in g . We will refer to the degree of a node as its *type*. The *mean* degree in network g is defined as $\hat{\eta}(g) = \sum_{i \in N} \eta_i(g)/n$.

Let $\mathbf{N}_k(g)$ be the number of nodes in network g with degree equal to k . The degree distribution in a network is a vector P , where $P(k) = |\mathbf{N}_k(g)|/n$ is the fraction of nodes with degree k . This degree distribution has support on $\mathcal{D} = \{0, 1, 2, \dots, n-1\}$. The degree distribution allows for an elegant way to study changes in network structure. In particular, the idea of redistributing links is captured by a Mean Preserving Spread (*MPS*) of the degree distribution. Given a degree distribution P , let the cumulative distribution function be denoted by $\mathcal{P} : \{1, 2, \dots, n-1\} \rightarrow [0, 1]$, where:

$$\mathcal{P}(\eta) = \sum_{x=0}^{\eta} P(x). \quad (1)$$

Let P and P' be two degree distributions defined on $\{0, 1, 2, \dots, n-1\}$ and \mathcal{P} and \mathcal{P}' the corresponding cumulative distribution functions.

Definition 1. P' is a mean preserving spread (*MPS*) of P if and only if P and P' have the same mean and

$$\sum_{k=1}^x \mathcal{P}(k) \leq \sum_{k=1}^x \mathcal{P}'(k) \quad (2)$$

for every $k \in \{1, 2, \dots, n-1\}$.

A simple example of a *MPS* shift for a network with $n = 4$ nodes arises when we move from a line network in which $g_{12} = g_{23} = g_{34} = 1$ to a star network in which $g_{12} = g_{13} = g_{14} = 1$.

2.2 Experimental Design

The main experiments were conducted at the University of Cambridge and programmed using the software z-Tree (Fischbacher [2007]).⁹ Subjects were recruited using the online recruitment system ORSEE; they received a fixed participation fee of £3 plus additional earnings depending on their performance in the experiment, according to the rules detailed in the Experimental Instructions (see Appendix A). In total 80 subjects participated in the experiments. The subjects were all students of the University of Cambridge. Two subjects did not provide information about their gender or educational status when completing the personal questionnaire after the end of the experiment. Of the 78 who did, 37 were male and 41 female students; 45 were undergraduates and the remainder were graduates; 19 were studying for a degree in economics, business or finance, while the remainder were drawn from a wide variety of other disciplines.

Each session consisted of 4 different experiments (referred to as "stages" in the instructions). In the first 2 experiments, the focus is on network perception, while in the last 2 experiments we study individual decision making in a context where knowledge of the network is important. In the present paper, our focus is on cognition of the overall structure of the network and therefore we will present the results of the first two experiments. Moreover, we will also present the results of experiments 3 and 4 which show that limitations in network cognition affect economic behavior.¹⁰

At the beginning of each session, after signing informed consent forms, subjects chose randomly their ID codes and then sat in front of a computer. Each subject typed in his/her ID code and all data was collected anonymously, identified only by the ID code. The instructions in Appendix A appeared on their screens.

In the first 2 experiments subjects are shown a graphical representation of a network for a given length of time, and then they are asked questions about it after the network has disappeared. The subjects are instructed to imagine that the nodes of the network represent other students in the university, and that connecting lines between nodes represent friendships. In each experiment there are two treatments. All subjects see the same network, but subjects in a treatment condition will see a different node colored in 'red' and labeled "YOU", relative to subjects in the other treatment. Here is a more detailed summary of the first 2 experiment; all the figures referred to in the text are in Appendix B:

- **Experiment 1 - Degree distribution.** Subjects are shown the network at the top of figure 11 (first treatment) or the network at the bottom of figure 11 (second

⁹A pilot was conducted at the Toulouse School of Economics Experimental Laboratory.

¹⁰After the experiments 1 and 2 on network perception, we conduct a pilot for future experimental work that focuses on the perception of specific links in the network. This pilot had the additional purpose of creating a break between the experiments focusing on perception and the ones focusing on individual decision making. In the instructions, see Appendix A, the pilot is referred to as stage 3 and therefore experiments 3 and 4 are referred to as stages 4 and 5 respectively.

treatment) for 60 seconds. After the network disappears they are asked a number of questions, including questions such as "*How many people in the group (including yourself) have exactly x friends?*" which allow us to generate subjects' perception of the degree distribution.

- **Experiment 2 - Changes in the network.** In the first treatment subjects are shown the network at the top of figure 12 for 30 seconds, and then the network at the bottom of figure 12 for 30 seconds. Note that the second network is a mean preserving spread of the first network. In the second treatment subjects are first shown the network at the top of figure 13 followed by the network at the bottom of figure 13: the only difference between treatments, apart from the assigned location, is that the mean preserving spread network is shown before the original network in the second treatment. The subjects are then asked a number of questions about the two networks, which are different from the questions asked in Experiment 1.

In experiments 3 and 4 subjects are shown a graphical representation of a network for 60 seconds, and then they have to make a choice which depends on their ability to remember who their friends (and friends of friends) are. The decision problem is akin to a binary-action best-shot game with a threshold. Subjects are given an endowment of 2 pounds, they are shown the network, and after the network disappears they are told which other individuals in the network have decided to contribute. The choice that they face is whether to contribute or not. If they contribute and a minimum number of friends (and friends of friends) also contribute then they earn an additional 4 pounds, otherwise they lose their endowment. There is a unique treatment so all subjects are assigned to the same node in the network and they are told the same information about the names of the other individuals who contribute. This is a more detailed summary of the last two experiments, all the figures referred to in the text are in Appendix B:

- **Experiment 3 - Unknown decision problem.** First, subjects are simply told that they are going to face a decision problem with real monetary payoffs, and that the effects of decisions on payoffs will depend on the way players are connected. They are then shown the network at the top of Figure 15 for 60 seconds. Second, the network disappears and they are told about the decision problem: they earn 4 pounds if the sum of their contribution, the contributions made by each of their friends, and the contributions made by each friend's friends, is equal to or more than 6 pounds. Finally, they are told the names of the individuals in the network who contributed, and they are asked whether they want to contribute or not.
- **Experiment 4 - Known decision problem.** First, subjects are told about the decision problem: they earn 4 pounds if the sum of their contribution and the contributions made by each of their friends is equal to or more than 4 pounds. Second, subjects are shown the network at the bottom of figure 15 for 60 seconds.

Finally, they are told the names of the individuals in the network who contributed, and they are asked whether they want to contribute or not.

3 Experimental results on cognition

In Experiment 1 we asked subjects to recall the degree distribution of the network in figure 1. Figure 2 shows the perceived mean and the perceived variance for each subject in the experiment, the black circles denote subjects assigned to be high type and the hollow triangles denote subjects assigned to be low type. The data reveal that this cognitive task is rather demanding and there is a fair amount of heterogeneity in subjects' reports.

Figure 3 shows the aggregated data for all subjects within the same treatment: it compares the degree distribution of the actual network (in black) with the degree distribution of the cognitive networks of subjects assigned to high (in gray) and low (in white) type. To test whether differences between the real and the cognitive networks are statistically significant, we used two types of test: standard t -tests for equality of means, and the Wilcoxon signed ranks test, where for each subject the "control" outcome was the actual network (i.e. the outcome that would obtain with perfect recall) and the "treatment" outcome was the outcome of the experiment (i.e. the outcome subject to cognitive constraints). The results were very similar for the two tests, so we only report those for the t -tests. We observe three main biases in subjects' perception of the degree distribution of the network.

The *first* bias is that subjects *underestimate the mean degree in the network*. The cognitive degree distribution of high type subjects has mean degree 4.194 and the cognitive degree distribution of low type subjects has mean degree 4.047. These perceived means are significantly lower than the actual mean degree, which is 4.667 ($p = 0.000$).¹¹

The *second* bias is that subjects *overestimate the number of rare types in the network*. On average they perceive that there exist individuals of types 1, 2, 5, 6 and 8 even though they are absent in the actual network. The *third* bias is that subjects *underestimate the number of frequent types in the network*. There are five nodes for each of types 3, 4 and 7 in the actual network, but subjects on average perceive a significantly lower number. Table 1 shows that these biases are statistically significant independently of the subject's exogenously assigned location in the network.¹²

There are two further differences between the real and perceived distributions, which we believe are a consequence of the last two biases for the specific network that we used in the experiment. The first difference is that subjects tend to perceive the presence of a larger number of types than there are in the actual network. In the actual network there

¹¹A p -value of 0.000 denotes significance at the 0.001 level.

¹²There is one notable exception which is discussed in detail in section 5.1: low type ($d = 3$) subjects on average perceive the correct number of degree 3 nodes in the network. We argue there that this is due to the presence of an offsetting "projection" bias.

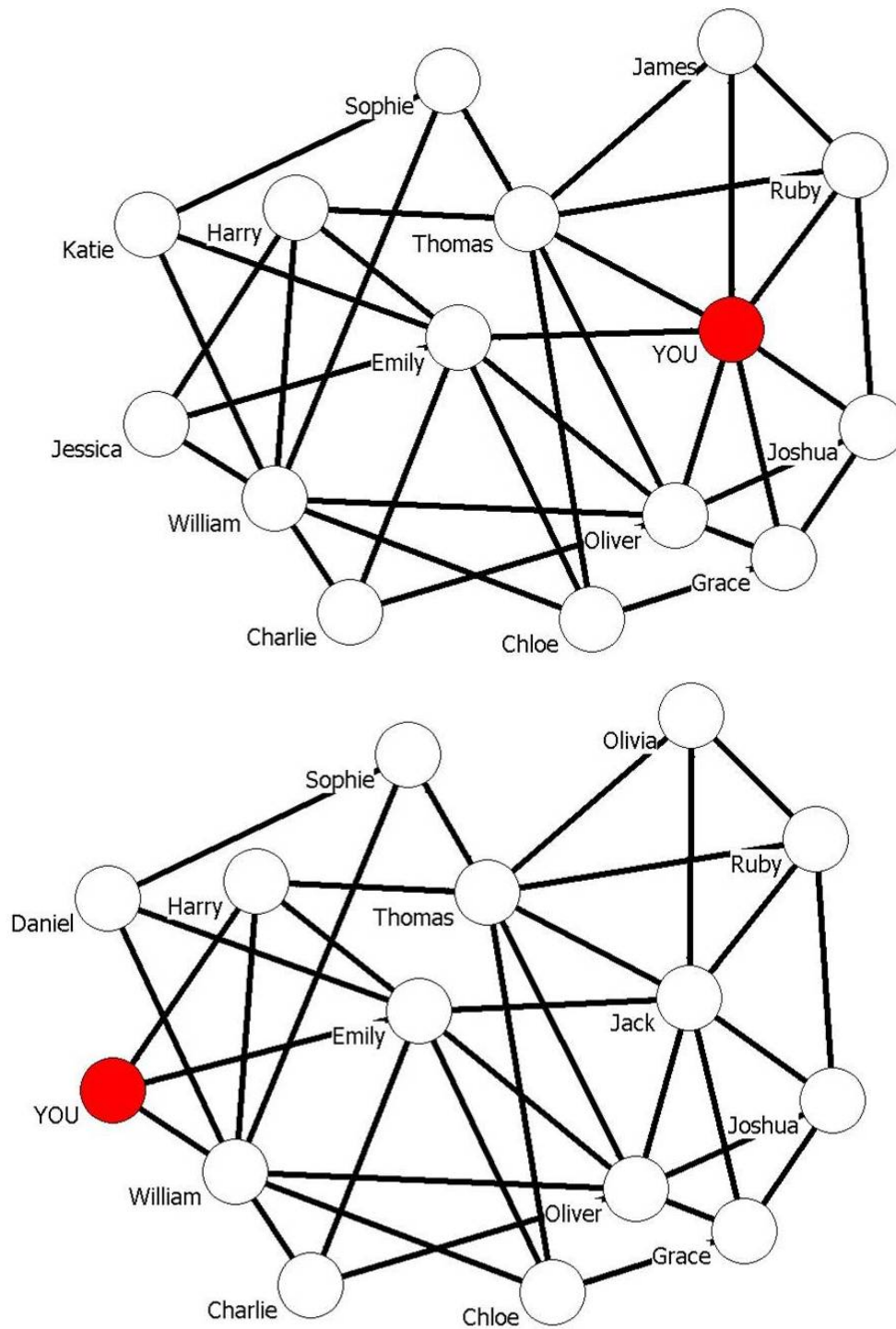


Figure 1: Network pictures shown to subjects in experiment 1. Top: Treatment 1 - High type with degree=7. Bottom: Treatment 2 - Low type with degree=3.

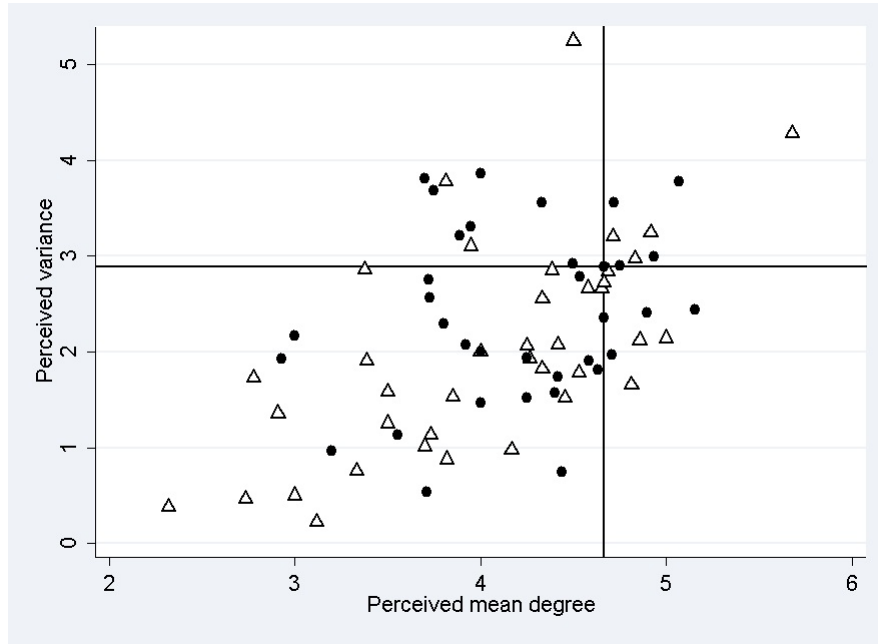


Figure 2: Perceived mean and variance for each subject. Black circles indicate subjects assigned to be high type and hollow triangles indicate subjects assigned to be low type.

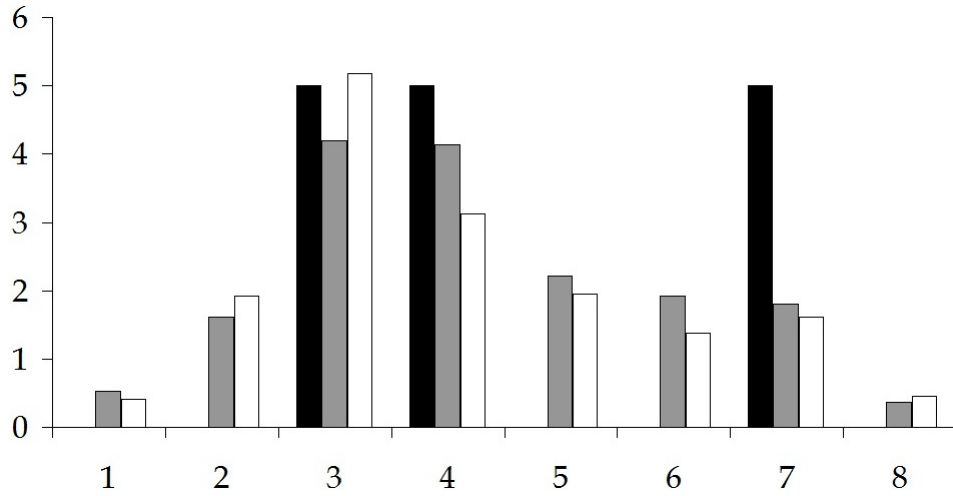


Figure 3: Degree distribution for the actual network (in black) and for the cognitive networks averaged out over all subjects assigned to be high (in gray) and low (in white) type.

	Cognitive-Actual		High-Low
	High type	Low type	Type
Type 1	0.528***	0.410**	0.118
Type 2	1.611***	1.923***	-0.312
Type 3	-0.806***	0.179	-0.985*
Type 4	-0.861*	-1.872***	1.011
Type 5	2.222***	1.949***	0.273
Type 6	1.917***	1.385***	0.532
Type 7	-3.194***	-3.385***	0.191
Type 8	0.361***	0.462*	-0.101
Number of types	2.528***	2.077***	0.450
Mean degree	-0.472***	-0.619***	0.147
Variance	-0.526***	-0.844***	0.318

Table 1: Second and third columns: Difference between cognitive and actual networks. Last column: difference between cognitive networks of high and low type subjects. Note: Statistically significant at the *** 0.01, ** 0.05 and * 0.1 level. In columns 2 and 3, significance levels are based on t -tests. Significance levels for the last column are based on the Mann-Whitney-Wilcoxon test for independent samples.

are only 3 types of individuals, with degree 3, 4 and 7, respectively. However, subjects, on average, perceive that there are 5.293 types of individuals in the network, and the difference is highly significant ($p = 0.000$). The overestimation of the number of types is a consequence of the overestimation of the rare types, because in the network used in the experiment the rare types are actually absent types. The second difference is that subjects underestimate the variance around the mean degree. On average, they perceive a variance equal to 2.198, which is significantly lower than the actual variance, equal to 2.889 ($p = 0.000$).

We now present additional evidence from Experiment 4 which suggests that these cognitive biases are robust. We study robustness by asking if perception biases disappear as subjects become more familiar with our experimental methodology. In Experiment 4 we showed subjects the network in figure 4 and then we asked them the same questions about the degree distribution. Note that the network is exactly the same as the network in Experiment 1 apart from the labels of the nodes. However, all subjects were assigned to the same location in the network, which is a node of degree 7 (i.e. high type) located next to the node assigned to low type subjects in Experiment 1.

Figure 5 is the equivalent of figure 3: it shows the aggregated data for all subjects dividing them according to their treatment assignment in Experiment 1. Specifically, it compares the degree distribution of the actual network (in black) with the degree

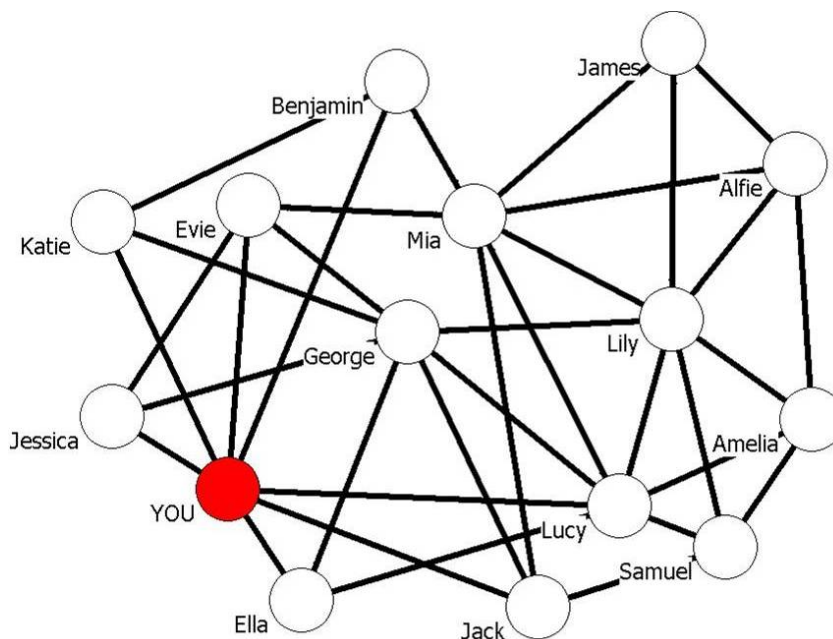


Figure 4: Network picture shown to subjects in Experiment 4.

distribution of the cognitive networks of subjects assigned to a high (in gray) and a low (in white) type in Experiment 1. The figure shows that the three biases originally identified are present in Experiment 4 as well: subjects underestimate the mean degree in the network and they overestimate (underestimate) the number of rare (frequent) types in the network.

4 Cognition in the Field

The laboratory setting allows the researcher to control the parameters of the experiment, but this tight control in turn raises questions about the scope of the findings. The first issue is whether our findings on biases are sensitive to the specific networks we use and the particular visualization of the chosen networks. This is the issue of internal validation. The second issue is about the validity of our findings beyond the laboratory: do these biases also arise in actual social networks or are they an artifact of the experimental design? We may refer to this as the problem of external validation. The aim of this section is to provide a systematic response to these concerns.

Our strategy is to ask how individuals perceive their real friendship network. We study data from two networks – a friendship network in a Silicon Valley firm (SVF) and a friendship network in an Italian University Research Center (URC). These networks

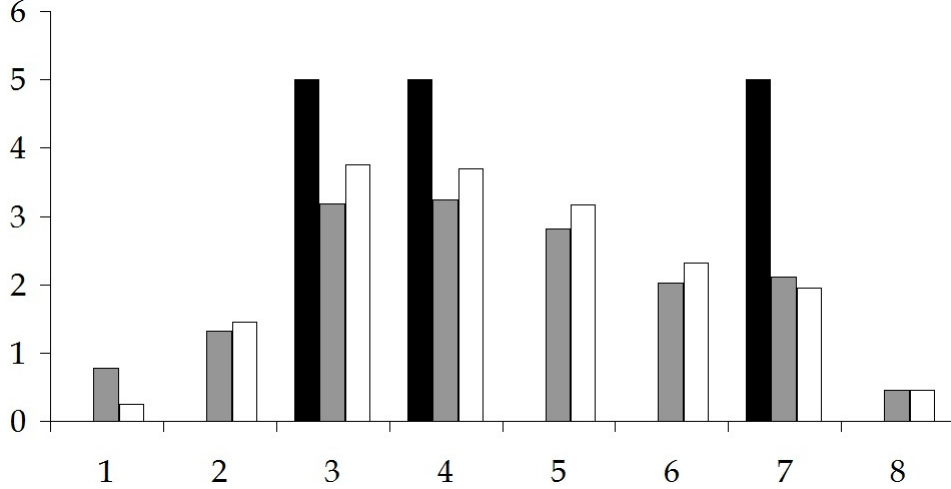


Figure 5: Degree distribution for the actual network (in black) and for the cognitive networks in Experiment 4. For ease of comparison with Experiment 1, we averaged out the cognitive networks over all subjects assigned to be high (in gray) and low (in white) type in *Experiment 1*. Note that all subjects were assigned to the same location in Experiment 4.

were first studied in Krackhardt (1987) and Casciaro (1998), respectively, and have been the subject of influential research in social psychology and sociology. Our main finding is that individuals’ cognition of these real world networks, which they themselves inhabit, exhibits biases which are similar to those we identified in our laboratory experiment. In particular, individuals in the SVF network perceive a lower mean connectivity than the true mean, they overestimate rare types and underestimate (almost all) frequent types. Individuals in the URC network perceive a lower mean connectivity than the true mean, they overestimate most rare types and underestimate most frequent types.

4.1 Constructing cognitive social networks

The tradition of using surveys to understand network cognition has a long and distinguished history in the social sciences (see Moreno [1960] for an early reference). In recent years, the literature has used the following methodology which was introduced in Newcomb [1961], Roethlisberger and Dickson [1939] and Krackhardt [1987]. Researchers give an $n \times n$ matrix to each of the n participants of a group. Each row/column of the matrix is labeled with the name of one of the members of the group, and participants have to input a 0 or a 1 for each cell in the matrix. Imagine that the social relation of interest is friendship. If participant K inputs 1 in the (i, j) entry then it means that K thinks that there is a friendship from i to j . The real social network is constructed by looking

at the entries by i and j on their link with each other: if both i and j input 1 in the (i, j) and (j, i) entries of their matrix then we say that there is a friendship between i and j in the real network. We provide an example to illustrate more concretely how the methodology works. Consider a group of three individuals 1, 2, 3 and imagine that the cognitive network matrices are as follows.

$$M_1 = \begin{pmatrix} 0 & 1 & 0 \\ 1 & 0 & 1 \\ 0 & 1 & 0 \end{pmatrix} \quad M_2 = \begin{pmatrix} 0 & 1 & 1 \\ 1 & 0 & 1 \\ 1 & 1 & 0 \end{pmatrix} \quad M_3 = \begin{pmatrix} 0 & 0 & 0 \\ 1 & 0 & 1 \\ 0 & 1 & 0 \end{pmatrix}$$

The real network is a line with individual 2 in the middle because $(1, 2) = (2, 1) = 1$ in M_1 , $(1, 2) = (2, 1) = (2, 3) = (3, 2) = 1$ in M_2 and $(2, 3) = (3, 2) = 1$ in M_3 . The cognitive network of 1 is the same as the real network. However, 2's cognitive network is a triangle because $(1, 3) = (3, 1) = 1$ in M_3 . On the other hand, 3's cognitive network is disconnected with 1 as an isolated individual because $(1, 2) = 0$ in M_3 .¹³

We use two survey-based data sets from well-known studies in the social psychology literature. The first data set is from Krackhardt's (1987) contribution and it is publicly available in the UCINET package for analysis of network data. It includes the cognitive network data for 21 managers at a 10-year old Silicon Valley firm producing high-tech machinery. The second data set is from Casciaro [1998] and it includes the cognitive network data for 24 (out of 25) members of a research center in an Italian University.¹⁴ The data sets will be hereafter referred to as the SVF (Silicon Valley Firm) and URC (University Research Centre) respectively.

¹³This is not the only way to construct a real/cognitive network given the data. The choice of the criteria to construct the networks is driven by the nature of the social relationship that the data represents. In our case we will be looking at friendship, a relationship which is more naturally viewed as reciprocal. Thus, a friendship between i and j in the real network exists if and only if *both* i and j state that both the (i, j) and (j, i) entries are equal to 1 in M_i and M_j . Similarly, the friendship between i and j is correctly perceived by k if and only if both the (i, j) and (j, i) entries are equal to 1 in M_k . However, if we were to examine advice, which is arguably non-reciprocal, then we may want to define that an advice link from i to j exists in the real network if and only if *both* i and j state that the (i, j) (but not necessarily the (j, i) entry) is equal to 1 in M_i and M_j .

¹⁴The two data sets have been collected using slightly different methods. In Krackhardt (1987), each participants had to answer a question like "Who is X friend with?" by checking the names of X 's friends on a list of the other managers of the organizations (including the participant). The cognitive network matrix of a participant is constructed from the participant's answer to 21 such questions, including the question in which X is the participant himself. In Casciaro (1998), each participant had to fill in the matrix representing the cognitive network directly. Specifically, the instructions stated the following: "By putting an 'X' in the cells of the following matrix, please indicate whether you think the people listed in each row (from 1 to 25) considers the people listed in each column (from A to Z) as personal friends."

4.2 Analysis of survey data

In this part we replicate the analysis in section 3 on the SVF and URC network data to investigate whether the biases that we found in the experimental data are present in the field data as well.

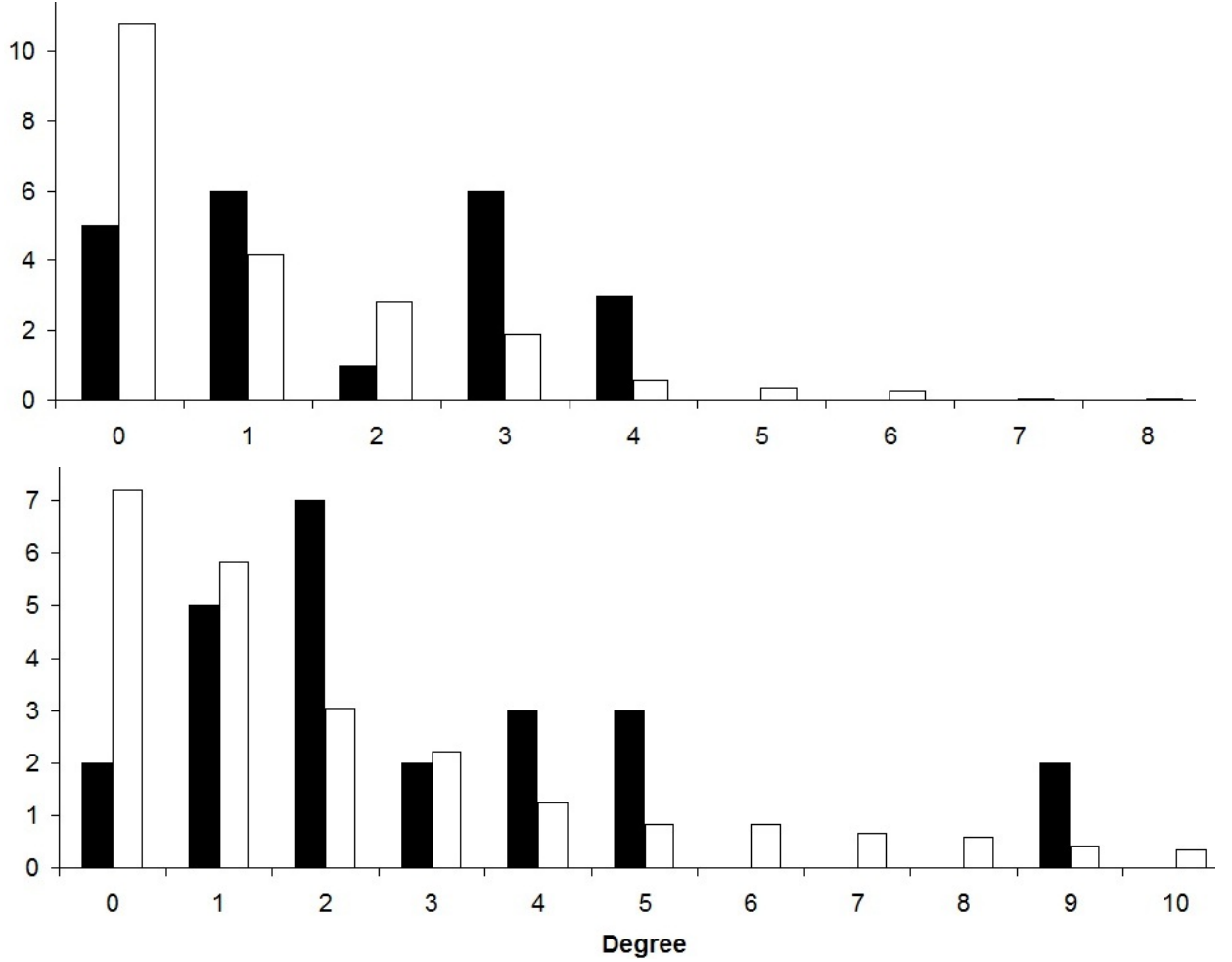


Figure 6: Degree distribution for the real (in black) and cognitive (in white) friendship networks from the SVF (above) and URC (below) data.

The first bias that we have identified in the experimental data is that individuals *underestimate the mean degree in the network*, and this bias is present in both the SVF and the URC data. In the SVF network individuals perceive the average number of friends to be 1.06, while the true average is 1.81; this difference is highly significant ($p = 0.000$). In the URC network, individuals perceive the average number of friends to be 2.56, while

Degree	Data	
	Krackhardt [1987]	Casciaro [1998]
0	5.76***	5.21***
1	-1.86***	0.83
2	1.81***	-3.96***
3	-4.10***	0.21
4	-2.43***	-1.75***
5	0.38*	-2.17***
6	0.24	0.83***
7	0.05	0.67***
8	0.05	0.58**
9		-1.58***
10		0.33

Table 2: Difference between cognitive and actual networks in the SVF and URC data. Statistically significant at the ***0.01, **0.05 and *0.1 level. Significance levels are based on the t -test.

the true number is 3.33; this difference is significant at the 5% level ($p = 0.011$).¹⁵

The other two biases that we have identified in the experimental data are that *participants overestimate (underestimate) the number of rare (frequent) types in the network*. Figure 6 is the equivalent of figure 3 for the survey-based data: it compares the degree distributions for the real (in black) and cognitive (in white) friendship networks for the SVF (above) and URC (below) data. The top part of figure 6 shows that these biases are present in the SVF network. Apart from type 0 individuals, the pattern is as in the experimental data: there is overestimation of rare types and underestimation of frequent types. Participants tend to perceive a lower number of types 1, 3 and 4, which are frequent types in the real network. Conversely, they tend to perceive a higher number of type 2 individuals who are rare types in the real network. Table 2 shows that all these biases are highly significant. Moreover, individuals perceive that there are type 5 individuals, who are absent in the real network. The case of type 0 individuals is difficult to compare with the experiment as in the laboratory there were no individuals of type 0.

The bottom part of figure 6 shows that, with a few exceptions¹⁶, there is a bias toward overestimation of rare types and underestimation of frequent types in the URC network. In particular, individuals perceive a lower number of types 2, 4, 5 and 9, than there actually exist in the real network. Conversely, they tend to perceive the presence of types 6, 7 and 8 even though they are absent in the real network. Table 2 shows that all these biases are highly significant. Finally, individuals significantly overestimate the number of

¹⁵As in section 3, the p -values are for the t -test.

¹⁶Individuals accurately perceive the number of type 1 and type 3 individuals.

type 0 individuals. This case is not directly comparable with the experimental data, as in the social network in the laboratory we did not have individuals of type 0.

5 Other Experimental Findings

This section discusses three other findings from our experiment. The *first* finding is that network cognition exhibits significant location effects. The main effect is that subjects assigned to be a low type exhibit a *projection bias*: they misperceive the type of other low type individuals and assign them the same type as themselves. The *second* finding is that the accuracy of individual cognition varies with the nature of the network: when we redistribute links in the original network (in the sense of creating a mean preserving spread of the degree distribution),¹⁷ individuals have a more accurate perception of the new network. The *third* finding is that network cognition affects economic decisions: on average, subjects are less likely to pick their payoff-maximizing strategy when the decision problem is made cognitively more demanding. Moreover, individuals with less accurate network cognition are also less likely to pick the payoff-maximizing strategy.

5.1 Location and cognition

A major research programme in social psychology and social anthropology studies how individual location in a network shapes his/her perception of the network (see the discussion in section 1.1). The existing literature relies, for the most part, on survey data. As location is shaped by individual choices on socialization, existing evidence on location effects is potentially subject to problems of endogeneity and omitted variable biases. One goal of our experiment was to address these concerns: we exogenously assign subjects to a different position in the network in each treatment, so that any difference in perception between treatments can clearly be attributed to the effect of location in the network. We test for the statistical significance of such differences by applying the Mann-Whitney Wilcoxon test for independent samples.

We see from Table 1 that subjects assigned to be high type ($d = 7$) tend to underestimate the number of type 3 individuals in the network, but subjects assigned to be low type ($d = 3$) do not. Since type 3 is one of the frequent types in the network, the underestimation by subjects assigned to be high type is consistent with the third bias in section 3. In contrast, subjects who are themselves assigned to be type 3 do not underestimate the frequency of this type in the network. This difference in perception of the number of type 3 individuals is statistically significant ($p = 0.051$, Mann-Whitney-Wilcoxon test).

Figure 7 allows us to gain further insight into the nature of this bias. We have two bars for low and high type subjects, showing the proportion of subjects that overestimate (in light gray), underestimate (in dark gray) and accurately (in black) indicate the number of

¹⁷For formal definitions on networks, refer to section 2.

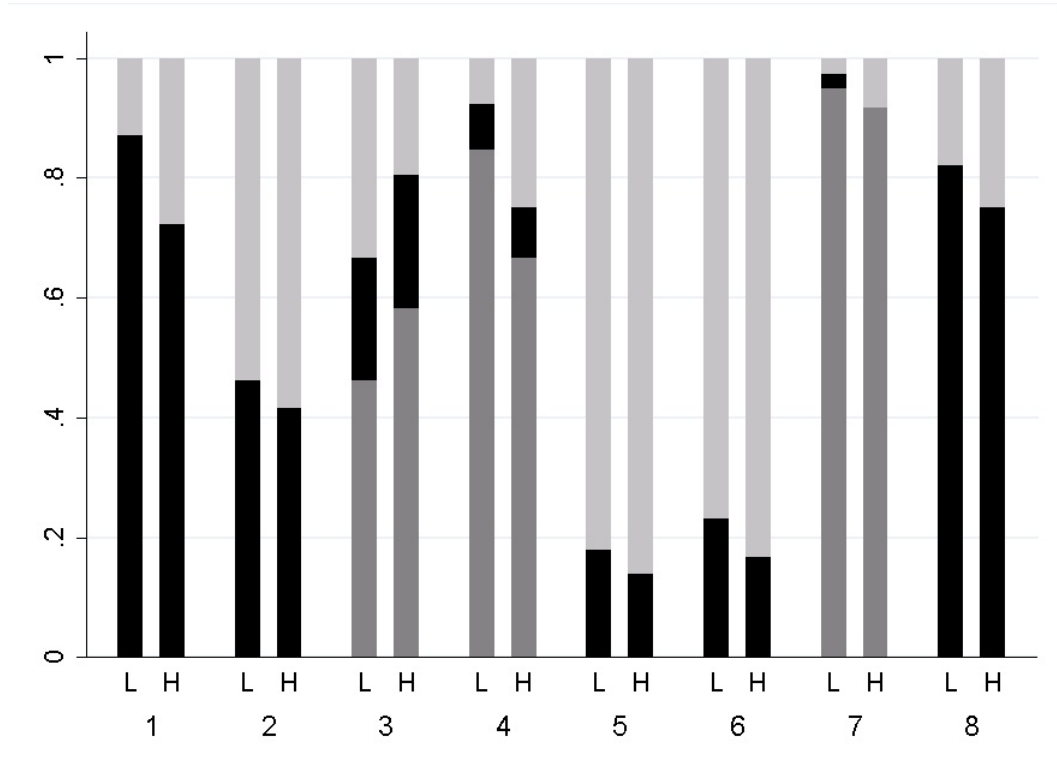


Figure 7: Proportion of subjects that overestimate (in light gray), underestimate (in dark gray) and accurately (in black) indicate the number of individuals of each type in the network. Left bar: subjects assigned to be low type. Right bar: subjects assigned to be high type.

individuals of each type in the network. Focusing on the estimate of the number of type 3 individuals, we see that the proportion of subjects that accurately indicates the number of type 3 individuals in the network is the same for both high and low type subjects. However, there is a larger proportion of low type subjects that *overestimates* the number of type 3 individuals in the network. If we now focus instead on the estimate of number of type 4 individuals, the opposite holds: there is a larger proportion of low type subjects that *underestimates* the number of type 4 individuals in the network. These two findings are related: subjects that overestimate the number of type 3 individuals in the network also tend to underestimate the number of type 4 individuals *more* than other subjects. In other words, subjects assigned to be low type display a *projection bias*: they misperceive the degree of other low type individuals because they mistakenly perceive them as "like themselves", i.e. they "project" their own type onto them. Interestingly, this projection bias is not present for subjects assigned to be high type.

Furthermore, we also have some experimental evidence on the robustness of the projection bias. As we explain in detail in section 3, in Experiment 4 we showed subjects the network in figure 4 and then we asked them the same questions about the degree distribution. Note that the network is exactly the same as the network in Experiment 1 apart from the labels of the nodes. However, all subjects were assigned to the same location in the network, which is a high type ($d = 7$) located next to the node assigned to low type subjects in Experiment 1. Thus, we expect that the projection bias should disappear in Experiment 4 given that all subjects were assigned to be of high type.

Figure 5 shows that the projection bias disappears in Experiment 4. This result also allows us to exclude the alternative explanation that the emergence of the projection bias is due to the location of the low type node in the bottom-left part of the network *image*. This is because in Experiment 4 all the subjects are assigned to the high type node which is *the closest one in the network image* to the node that low type subjects were assigned to in the first part of the experiment. If the projection bias were due to the low type subjects' location on the image in Experiment 1 then we should observe that all subjects have a projection bias in Experiment 4, but figure 5 shows that this is clearly not the case.

A second location effect is on subjects' perception of the key individuals in the network. We asked subjects “*In your opinion, who are the key individuals in the group?*”. We then compared, for each individual in the network, the probability of being identified as a key individual by high type and low type subjects. For most individuals in the network these probabilities did not differ significantly. However, there are two exceptions: the individuals named Harry and William who are of type 4 and 7 respectively. Crucially, both are directly linked to the low type subjects and neither is linked directly to the high type subjects. We find that low type subjects are *more* likely to identify Harry ($p = 0.033$) and William ($p = 0.026$) as key individuals as compared to high type subjects. This is evidence that low type individuals have a tendency to attribute more importance to their own connections in the context of the overall network compared to the importance given to those individuals by a subject who is not connected to them. The converse effect is not present for high type individuals, possibly because high type subjects have many connections and therefore they do not deem an individual important just because that individual is one of their connections.¹⁸

A third location effect is that the *variance of the perceived mean degree is higher for subjects assigned to be low type*. The difference is statistically significant, using Levene's (1960) robust test statistic for equality of variances ($p = 0.061$). A conjecture that we are planning to explore in future work is that this is a consequence of the projection bias for the specific type of network that we investigated in Experiment 1.

¹⁸An alternative explanation is that low type subjects noticed that they were directly connected to individuals with the same name as the second and third in the line of succession to the throne of the United Kingdom.

5.2 Changing the structure of the network

This section examines the relation between the structure of the network and the accuracy of network cognition. In other words, we would like to understand whether some network architectures are easier to understand and recall as compared to others. This question is of interest in the context of network design: for instance, if cognition costs are higher for some networks then optimal design should reflect these costs. It is also of interest if we wish to study the relation between network structure and individual behavior. In this spirit, Galeotti et al. (2010), develop a number of results which relate the (subjectively perceived) degree distribution of a network to the equilibrium behavior of individuals. In an experimental context, when we vary the network, individual behavior may be affected both by the change in the network itself *and* also by the changes in the accuracy of the perception of the network. So it is important to understand if the accuracy of individual cognition of a network varies with the structure of the network. We will focus on a mean preserving spread (*MPS*) of the degree distribution in the network (see definition in section 2).

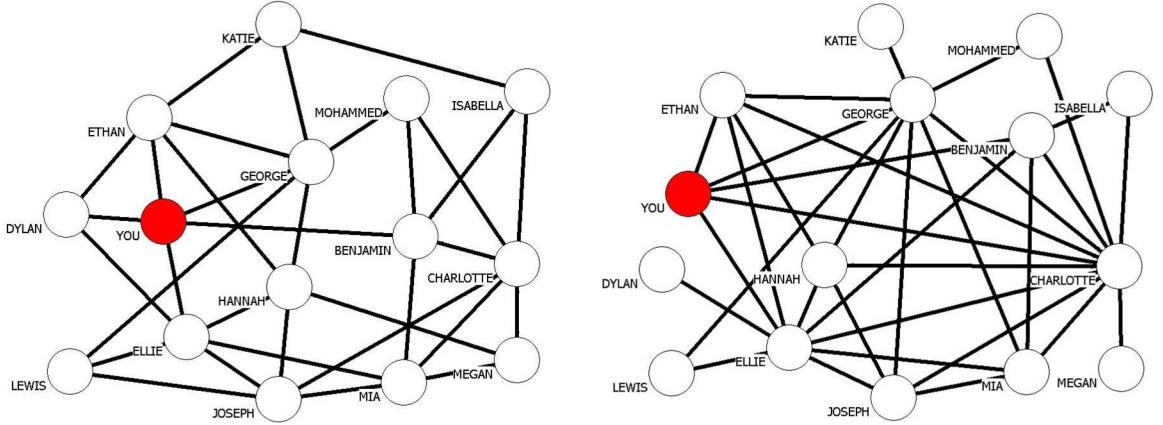


Figure 8: Network pictures shown to subjects in Treatment 1 of Experiment 2 (high type). Left: Original network shown in the first 30 seconds. Right: Mean-preserving spread of original network shown in the last 30 seconds.

We carried out two treatments, which varied the subject's location and the order in which they saw the two networks. In the first treatment, subjects were assigned to be high type, and they saw the original network *before* seeing the *MPS* network. This is the order represented in Figure 8. In the second treatment, subjects were assigned to be low type, and they saw the original network *after* seeing the *MPS* network. This is the order shown in Figure 9. All subjects were then asked questions that elicited their perceptions of the lower and upper tail of the degree distribution for each of the two networks. Specifically,

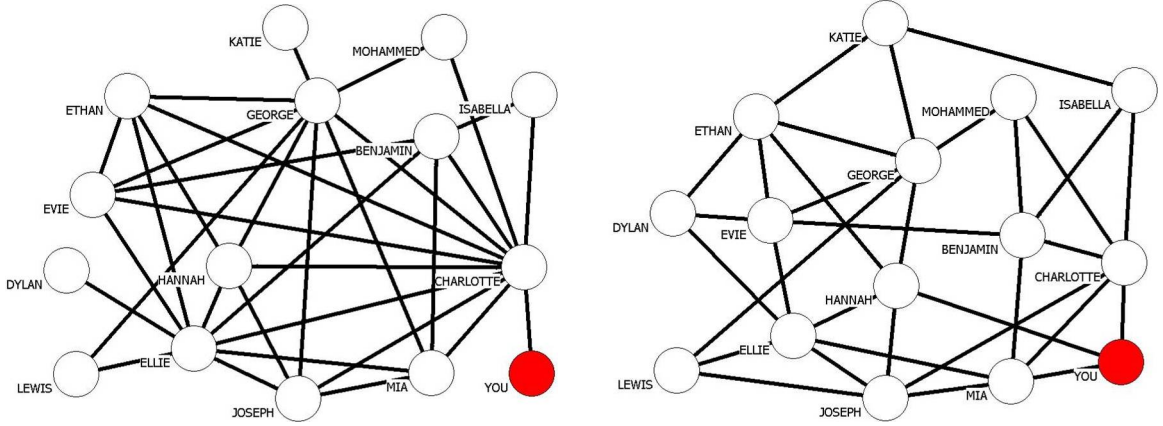


Figure 9: Network pictures shown to subjects in Treatment 2 of Experiment 2 (low type). Left: Mean-preserving spread of original network shown in the first 30 seconds. Right: Original network shown in the last 30 seconds.

they were required to specify the number of individuals in the network who had fewer than two friends, and the number of individuals who had at least three friends.

Figure 10 illustrates the results for the original network (on the left) and the *MPS* (on the right) by showing the number of individuals with fewer than two friends and at least three friends for the real network (in black), the cognitive network of high type (in gray) and low type (in white) subjects. The most striking feature of the results is clearly the substantial underestimate, by all subjects, of the number of individuals with at least three friends in the original network. The actual number is 15, but the mean perceived number is only 10.615 for high type subjects and 10.976 for low type subjects. These differences are highly significant. In contrast, perception of the number of individuals with at least three friends is surprisingly accurate for the *MPS* network: subjects of both types show no significant bias in this case. Turning to the lower tail of the degree distribution, we find that subjects overestimate the number of individuals with fewer than two friends in the original network, and underestimate it in the *MPS* network. The differences in both cases are statistically significant, but small in magnitude.¹⁹ In summary, subjects appear to perceive more accurately the *MPS* network.

How can we account for this improvement in accuracy of network cognition? A *MPS* of a network would usually lead to the types in the network being further apart, and this is indeed the case for the *MPS* network in Experiment 2. Thus, it may be that as the types

¹⁹Specifically, the true number for the original network is zero, while the mean perceived number is 0.692*** for high type subjects and 0.220* for low type subjects. For the *MPS* network, the actual number is three, while the mean perceived number is 2.564** for high type subjects and 2.390*** for low type subjects.

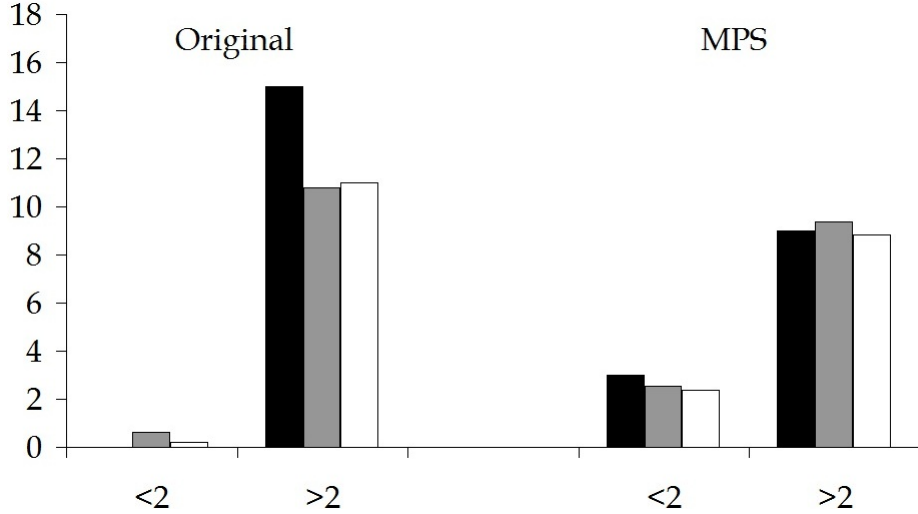


Figure 10: Number of individuals with fewer than two connections and at least three connections in the real network (in black) and in the cognitive networks of high type (in gray) and low type (in white) subjects. The results for the original network are in the left panel, and the results for the *MPS* network are in the right panel.

are pushed apart it becomes easier for individuals to differentiate them and this improves accuracy of perception of the network. Another difference between the *MPS* network and the original network is that the *MPS* network has a larger number of types. In general, a *MPS* of a network may increase, decrease or leave unchanged the number of types, but it may be that changing the number of types leads to a variation in the accuracy of perception of the network. The results for the specific *MPS* in Experiment 2 suggest that there is an improvement in the accuracy of perception of the degree distribution when the number of types increases. While both these conjectures are plausible, we view them as preliminary and would like to explore them in future work.

5.3 Cognition and behavior

The focus in this paper is on network perception, but we also take a first step to examine the relationship between accuracy of perception and behavior. We included two experiments in which subjects face a decision problem where the payoff-maximizing decision depends on their knowledge of the network. The problems are described in section 2: the choice is straightforward if the subject can see the network when making the choice, but it requires the ability to recall details about the network when the network picture is no longer available.

We vary the cognitive difficulty of the task in the two experiments. In Experiment

3, subjects are shown the network *before* they learn the nature of the decision problem they will be confronted with: all they know when they see the picture is that they will be playing an economic game with real monetary payoffs, where the effects of their decisions and other players' decisions will depend on the way players are connected. This makes the cognitive task demanding, since subjects cannot focus attention on a particular feature or subset of the network while looking at the picture. In Experiment 4, on the other hand, subjects see the network *after* learning the nature of the decision problem: in particular, they learn that the only individuals who can have an impact on their payoffs are their friends. Other individuals' decisions are payoff-irrelevant, so that a subject seeking to maximize his payoff can simply focus attention on his friends.

We would therefore expect subjects to make the "wrong" decision more often in Experiment 3 than in Experiment 4. This is indeed the case: 55% of subjects fail to pick the payoff-maximizing action in the more demanding Experiment 3, compared with 26% in Experiment 4.²⁰

We then check whether individual behavior in these experiments is related to cognition in the previous experiments. We construct several measures of cognitive accuracy based on answers to the questions about network perception in the first two experiments. For the first experiment, which elicited subjects' cognitive degree distribution, we use three measures, corresponding to the three main biases identified in section 3: the first captures inaccuracy in perception of the number of rare types in the network, the second inaccuracy in perception of the number of frequent types in the network, and the third inaccuracy in perception of the mean degree. For the second experiment, which investigated differences in perception as we varied network structure, we construct three measures: the first one captures the accuracy in answering questions about the number of low types in the original network, the second one captures the accuracy in answering questions about the number of high types in the original network and the third one captures the accuracy in answering questions about the number of low types in the mean-preserving spread network.

Tables 3 and 4 report our main results on the link between network cognition in the first three experiments and behavior in the last two. We find two highly significant effects. First, individuals who are more prone to *overestimate the number of rare types* in the network are also *more likely to contribute* to the local public good. This is true in *both* experiments. Remembering that the payoff-maximizing decision is to contribute in Experiment 3, and *not* to contribute in Experiment 4, this suggests that individuals with a very inaccurate perception of the network have difficulty picking the payoff-maximizing action, and resort partly to other criteria in making their choice. We conjecture that their

²⁰Note that owing to a programming glitch, subjects in Experiment 4 were told that Olivia, Grace and Sophie had chosen to contribute, when in fact these names did not appear in the network for Experiment 4. This may have made the problem harder and contributed to the rather high proportion of wrong decisions. We therefore take the 26% as an upper bound on the proportion of wrong answers for the cognitively easier task. Obviously, a lower proportion would make the difference with the cognitively more demanding task even greater.

Probability of picking the the payoff-maximizing action	Experiment 3			
	Coeff.	Stand. Error	z	$P > z $
Exp 1: (Mean Bias) ²	0.214	0.182	1.18	0.239
Exp 1: (Underestimate Frequent Types Bias) ²	0.043	0.064	0.68	0.499
Exp 1: (Overestimate Rare Types Bias) ²	0.137	0.072	1.90	0.057*
Exp 2: Accuracy Perception Low Degree (ON)	0.023	0.543	0.04	0.966
Exp 2: Accuracy Perception High Degree (ON)	0.070	0.377	0.19	0.852
Exp 2: Accuracy Perception Low Degree (MPS)	0.652	0.340	1.92	0.055*
Age	-0.064	0.048	-1.34	0.181
Gender	0.312	0.328	0.95	0.341
Education	0.351	0.252	1.39	0.164
Econ	-0.362	0.391	-0.92	0.356
Constant	0.021	1.224	0.02	0.986
n	77			
R^2	0.0740			

Table 3: Probit regression to assess performance in Experiment 3. The binary dependent variable takes value of 1 if the subject picks the correct decision, and 0 otherwise. ON=Original Network. MPS=Mean-Preserving Network.

tendency to privilege contribution may be related to the fact that the decision problem is framed in terms of contributions to a local public account, with potential positive externalities on friends (and their friends).²¹

The second significant effect concerns perception of very low degree types. Out of the first three experiments, only Experiment 2 had such types. Specifically, the network obtained by taking a mean preserving spread of the base network degree distribution did contain several individuals with degree one. The ability to perceive correctly degree one individuals plays an important role in Experiment 3, because identifying the payoff-maximizing action hinges on accurate perception of one such individual (Olivia). This is not the case in Experiment 4. Indeed, we find that subjects who perceive very low types more accurately in Experiment 2 are also significantly more likely to choose the payoff-maximizing action in Experiment 3 (and not in Experiment 4).

²¹Interestingly, we find that among our subjects, the proportion of contributors is lower for economics students than for students from other disciplines. This is true in both experiments, but the difference is much greater for Experiment 4, where contributing is *not* the individual's payoff-maximizing action.

Probability of picking the the payoff-maximizing action	Experiment 4			
	Coeff.	Stand. Error	z	$P > z $
Exp 1: (Mean Bias) ²	0.025	0.171	0.15	0.884
Exp 1: (Underestimate Frequent Types Bias) ²	0.083	0.086	0.96	0.335
Exp 1: (Overestimate Rare Types Bias) ²	-0.416	0.223	-1.87	0.062*
Exp 2: Accuracy Perception Low Degree (ON)	-0.484	0.579	-0.84	0.403
Exp 2: Accuracy Perception High Degree (ON)	-0.126	0.445	-0.28	0.777
Exp 2: Accuracy Perception Low Degree (MPS)	-0.568	0.379	-1.50	0.134
Age	-0.035	0.042	-0.84	0.402
Gender	-0.278	0.369	-0.75	0.451
Education	0.249	0.273	0.91	0.362
Econ	0.606	0.485	1.25	0.212
Constant	3.165	1.348	2.35	0.019
n	77			
R^2	0.0740			

Table 4: Probit regression to assess performance in Experiment 4. The binary dependent variable takes value of 1 if the subject picks the correct decision, and 0 otherwise. ON=Original Network. MPS=Mean-Preserving Network.

6 Conclusion

We studied individual ability to memorize and recall information about friendship networks using a combination of experiments and survey-based data. In our experimental work subjects are shown a network and also assigned a location in this network. They are then asked questions about the network. The experimental data suggests that subjects exhibit three main cognitive biases. The first one is that they underestimate the mean degree compared to the actual network. The second one is that they overestimate the number of rare types. The third is that they underestimate the number of frequent types. We then analyze survey data from two ‘real’ friendship networks – the friendship network of a Silicon Valley firm (first studied in Krackhardt [1987]) and the friendship network in a University Research Centre (first studied in Casciaro [1998]). We find, somewhat remarkably, that individuals in these ‘real’ networks exhibit the same cognitive biases.

Our laboratory experiment yields three further findings. First, location affects cognition: low and high type subjects differ in their perception of the network along a number of dimensions such as perception of low degree others, the identity of key individuals in the network, and the dispersion of mean degrees. Second, the accuracy of network cognition varies with the architecture of the network: a mean preserving spread of the

degree distribution leads to greater cognitive accuracy. Third, network cognition affects economic behavior: when we make the decision problem more cognitively demanding, subjects on average perform less well. Moreover, subjects who perceive the network more inaccurately, as captured by the tendency to overestimate the number of rare types, find it harder to pick their payoff-maximizing action.

Our findings suggest that exploring further the biases in the way people process, recall and use information about social networks, and the relationship between network cognition and economic behavior, represents a promising avenue for future research.

References

- M. Alpert and H. Raiffa. A progress report on the training of probability assessors. In D. Kahneman, P. Slovic, and A. Tversky, editors, *Judgment under uncertainty: Heuristics and biases*, pages 294–305. Cambridge University Press, 1969/1982.
- T. Casciaro. Seeing things clearly: Social structure, personality, and accuracy in social network perception. *Social Networks*, 20:331–351, 1998.
- G. Charness, F. Feri, M. A. Melendez-Jimenez, and M. Sutter. Equilibrium selection and random networks in experimental games. *Working Paper, University of California, Santa Barbara*, 2011.
- R. I. Dunbar. The social brain hypothesis. *Evolutionary Anthropology*, 6:178–190, 1998.
- R. I. Dunbar. The social brain: mind, language and society in evolutionary perspective. *Annual Review of Anthropology*, 32:163–181, 2003.
- U. Fischbacher. z-tree: Zurich toolbox for ready-made economic experiments. *Experimental Economics*, 10(2):171–178, 2007.
- A. Galeotti, S. Goyal, M. O. Jackson, F. Vega-Redondo, and L. Yariv. Network games. *Review of Economic Studies*, 77(1):218–224, 2010.
- S. Goyal. *Connections: An Introduction to the Economics of Networks*. Princeton University Press, 2007.
- M. O. Jackson. *Social and Economic Networks*. Princeton University Press, 2008.
- D. Kahneman and A. Tversky. Prospect theory: the analysis of decision making under uncertainty. *Econometrica*, 47(3):263–291, 1979.
- D. Krackhardt. Cognitive social structures. *Social Networks*, 9:109–134, 1987.
- D. Krackhardt and M. Kilduff. Whether close or far: Social distance effects on perceived balance in friendship networks. *Journal of Personality and Social Psychology*, 76(5):770–782, 1999.
- E. Kumbasar, K. A. Romney, and W. H. Batchelder. Systematic biases in social perception. *American Journal of Sociology*, 100(2):477–505, 1994.
- J. L. Moreno. *The Sociometry Reader*. New York: Free Press, 1960.
- T. Newcomb. *The Acquaintance Process*. Holt, Rinehart and Winston, 1961.

- M. G. Preston and P. Baratta. An experimental study of the auction-value of an uncertain outcome. *The American Journal of Psychology*, 61(2):183–193, 1948.
- F. Roethlisberger and W. Dickson. *Management and the Worker*. Harvard University Press., Cambridge: MA, 1939.
- E. B. Smith, T. Menon, and L. Thomson. Status differences in the cognitive activation of social networks. *Organization Science*, 2011.
- A. Tversky and D. Kahneman. Judgment under uncertainty: Heuristics and biases. In D. Kahneman, P. Slovic, and A. Tversky, editors, *Judgment under uncertainty: Heuristics and biases*, pages 3–20. Cambridge University Press, 1982.
- F. Vega-Redondo. *Complex Social Networks*. Cambridge University Press, 2007.
- P. Wakker. *Prospect Theory: For Risk and Ambiguity*. Cambridge University Press., Cambridge, UK, 2010.

A Experimental Instructions

Welcome; you are going to participate in an economics experiment. Your answers and decisions will have no consequences whatever for your course grades or your degree.

This experiment studies decision-making. There are no right or wrong decisions – you should simply decide according to your preferences.

The experiment will be remunerated. You will receive the remuneration at the end. I will call in each participant individually to give him or her the amount earned. The amount you receive will depend on your decisions/answers and on those of the other participants. I will explain the rules of the experiment in a moment.

Please now switch off your mobile phones, and do not talk to each other during the experiment. If you have a question, raise your hand and I will come and answer.

Are there any questions?

If there are no questions, we can start. You will see some instructions on your screens. Take the time you need to read them carefully before clicking on “Next” to move to the next screen. Whenever you are asked a question, take the time you need to answer. If you see the phrase “waiting for the other participants” on your screen, please wait patiently: it means some of the other participants have not yet clicked on “Next”. If you want to ask a question during the experiment, please raise your hand.

General rules

During this experiment you will be asked at times to take decisions that will affect your outcome and the outcome for other participants. It is important for you to know that your decisions will remain completely confidential.

Each person will be assigned a fictitious name, depending on the ID code he or she picked at the beginning.

When we need to refer to specific participants in the instructions, we will always use their fictitious name and never their real name or any other information that might allow others to identify them.

Please type in your ID code, exactly as it is written on the ticket you picked at the beginning.

If you have a question, please raise your hand.

If there are no questions, we can move on to the specific instructions.

Specific instructions (Stage 1)

There are several parts to this experiment. We will provide specific instructions for each part before the start.

In the first part, we will show you a visual representation (a diagram) showing a set of relationships within a group of people, including yourself. Imagine that the other people are, like you, students of this university. In the diagram, each dot represents a person, and has a (fictitious) name. A line joining two dots means that those two people are connected: they are friends. We are going to show you the diagram for 60 seconds, then the diagram will disappear from your screen, and we will ask you some questions about the set of relationships you have just seen.

If you have any question, raise your hand.

When you are ready to see the diagram, click on “Next”.

[Subjects are shown the networks in Figure 11 for 60 seconds]

On the next screen you will be asked to describe the set of relationships you have just seen, in your own words. You will have 60 seconds to do this.

Pressing “Enter” will cause what you have written to be saved, and then disappear from the text box. Saved text will be displayed in the top half of the screen. When the 60 seconds is up, please press Enter.

When you are ready to answer the question, click on “OK”.

Q1 Describe the set of relationships you have just seen, in your own words. You have 60 seconds to do this.

Q2 How many people are there altogether in the group?

Q3 In your opinion, who are the key individuals in the group?

Q4 How many people in the group (including yourself) have exactly one friend?

Q5 How many people in the group (including yourself) have exactly two friends?

Q6 How many people in the group (including yourself) have exactly three friends?

Q7 How many people in the group (including yourself) have exactly four friends?

Q8 How many people in the group (including yourself) have exactly five friends?

Q9 How many people in the group (including yourself) have exactly six friends?

Q10 How many people in the group (including yourself) have exactly seven friends?

Q11 How many people in the group (including yourself) have exactly eight friends?

Specific instructions (Stage 2)

In the next part of the experiment, we will show you visual representations (diagrams) of two sets of relationships within a group of people, still including yourself. Once again, imagine that the other people are students of this university.

In the diagrams, dots and connecting lines have the same interpretation as in the previous diagram. We are going to show you the first diagram for 30 seconds, then the diagram will disappear from your screen, and we will show you the second diagram, also for 30 seconds. After this diagram also disappears from your screen, we will ask you some questions about the two new sets of relationships you have just seen.

If you have any question, raise your hand.

When you are ready to see the diagrams, click on “Next”.

[Subjects in Treatment 1 are shown the networks in Figure 12 for 30 seconds each and subjects in Treatment 2 are shown the networks in Figure 13 for 30 seconds each]

Q1 Are there more people in the first group than in the second group?

Q2 How many people have at least three friends in the first group?

Q3 How many people have at least three friends in the second group?

Q4 How many people have fewer than two friends in the first group?

Q5 How many people have fewer than two friends in the second group?

Q6 Is the number of friends more variable in the first group than in the second group?

Q7 Is the number of friends more variable in the second group than in the first group?

Specific instructions (Stage 3)

We are now going to show you one more visual representation (diagram) of a set of relationships within another group of people. Once again, imagine that you are part of the group, and the other people are students of this university.

In the diagram, dots and connecting lines have the same interpretation as in the previous diagrams. We are going to show you the diagram for 60 seconds, then the diagram will disappear from your screen, and we will ask you questions about the new set of relationships you have just seen.

If you have any question, raise your hand.

When you are ready to see the diagram, click on “Next”.

[Subjects are shown the networks in Figure 14 for 60 seconds]

Q1 How many people are there altogether in the group?

Q2 Are the following people friends: Evie, Charlotte

Q3 Are the following people friends: Mia, James

Q4 How many friends does George have?

Q5 How many friends does Lucy have?

Q6 Which of the following are Ella’s friends: Charlotte, Jack, Lucy, Evie, Samuel?

Q7 Which of the following are Mia’s friends: George, Benjamin, Evie, Lucy?

Specific instructions (Stage 4)

In the next part of the experiment, you will play an economic game, with real monetary payoffs. We will describe the game before you start to play. It is a group game, in which each player's payoff depends on his or her decisions, and on the decisions of other group members. Moreover, *the effects of decisions on payoffs depend on the way players are connected*. We will use a diagram like the ones used earlier in this experiment to show how you and the other players are connected. You will see this diagram on your screen for 60 seconds; it will then disappear and we will explain the game to be played.

Note that you will not be shown the diagram again before playing the game.

If you have any question, raise your hand.

When you are ready to see the diagram, click on "Next".

[Subjects are shown the network at the top of Figure 15 for 60 seconds.]

We now describe the economic game. Each player in the game is given an endowment of **2 pounds**. He or she has to decide whether to **keep** this endowment or to **contribute** it to a local public account.

Once all contribution decisions have been made, each player earns **4 pounds** if the sum of his/her contribution, the contributions made by each of his/her friends, and the contributions made by each friend's friends, is equal to or more than 6 pounds.

Each player's payoff from the game consists of his/her earnings plus the endowment if it has not been contributed.

Examples: if you contribute and at least two other players who are your friends or friends of your friends contribute, your payoff will be 4 pounds.

If you do not contribute and at least three other players who are your friends or friends of your friends contribute, your payoff will be 6 pounds.

If you do not contribute and fewer than three other players who are your friends or friends of your friends contribute, your payoff will be 2 pounds.

If you contribute and fewer than two other players who are your friends or friends of your friends contribute, your payoff will be 0 pounds.

In a moment, we will ask you to play this game as if you knew how the other players would play it. Specifically, we will assign contribution decisions to the other players in the group, and *tell you who chose to contribute*. We will then ask you for your contribution decision.

Here are the names of the other players who have chosen to contribute: *Olivia, Ruby*.

The other players have chosen not to contribute. Please specify your decision:

- I contribute my endowment to the local public account, or
- I do not contribute to the local public account

Specific instructions (Stage 5)

We will now ask you to play a different economic game. We first describe the game, then we will show you the ways different players are connected, and finally you will play the game. Here we describe the economic game. As in the previous game, each player is given an endowment of **2 pounds**. He or she has to decide whether to **keep** this endowment or to **contribute** it to a local public account.

The difference from the previous game is as follows. Once all contribution decisions have been made, each player earns **4 pounds** if the sum of his/her contribution and the contributions made by each of his/her friends is equal to or more than 4 pounds. As before, each player's payoff from the game consists of his/her earnings plus the endowment if it has not been contributed.

In a moment, we will ask you, once again, to play this game as if you knew how the other players would play it. Specifically, we will assign contribution decisions to the other players in the group, and tell you who chose to contribute. We will then ask you for your contribution decision.

First, we are going to show you how all the players, including yourself, are connected, on a diagram like the ones used previously. You will see the diagram for 60 seconds, then it will disappear from your screen, and the names of the players who have chosen to contribute will appear.

If you have any question, raise your hand.

When you are ready to see the diagram, click on "Next".

[Subjects are shown the network at the bottom of Figure 15 for 60 seconds.]

Here are the names of the other players who have chosen to contribute:

Olivia, Grace, Sophie.

The other players have chosen not to contribute. Please specify your decision:

- I contribute my endowment to the local public account, or
- I do not contribute to the local public account

We now ask you some questions about the set of relationships between players in the game you have just played.

Q1 How many people in the group (including yourself) have exactly one friend?

Q2 How many people in the group (including yourself) have exactly two friends?

Q3 How many people in the group (including yourself) have exactly three friends?

Q4 How many people in the group (including yourself) have exactly four friends?

Q5 How many people in the group (including yourself) have exactly five friends?

Q6 How many people in the group (including yourself) have exactly six friends?

Q7 How many people in the group (including yourself) have exactly seven friends?

Q8 How many people in the group (including yourself) have exactly eight friends?

Specific instructions (Stage 6)

In this final part of the experiment, we ask you to guess the proportion of correct answers you have given to the questions you have been asked so far. We also ask you to guess how well you have done relative to other participants. You will be remunerated for each correct guess; the amount will be shown on your screen before you make each guess.

Please click on “Next” to see the first question.

What proportion (%) of questions so far do you believe you have answered correctly? You will receive two pounds in addition to your other earnings if you guess correctly.

- 0 - 10%
- 11 - 20%
- 21 - 30%
- 31 - 40%
- 41 - 50%
- 51 - 60%
- 61 - 70%
- 71 - 80%
- 81 - 90%
- 91 - 100%

If we rank all participants in the session according to the proportion of correct answers they have given, from the top (those with the highest proportion) to the bottom (those with the lowest proportion), in which quintile do you think you will be? You will receive 2 pounds in addition to your other earnings if you guess correctly.

- First quintile (top 20%)
- Second quintile
- Third quintile
- Fourth quintile
- Fifth quintile (bottom 20%)

Do you think your combined earnings from the two economic games are above or below average? You will receive 1 pound in addition to your other earnings if you guess correctly.

- Above average
- Below average

Final instructions (Stage 6)

Number of pounds earnt in Stage 4:

Number of pounds earnt in Stage 5:

Number of pounds earnt in Stage 6:

Show-up Fee:

Total:

The experiment has now ended. Thank you for your participation. We now ask you to complete the following questionnaire. As soon as you finish the questionnaire you can leave the laboratory.

B Network pictures used in the experiment

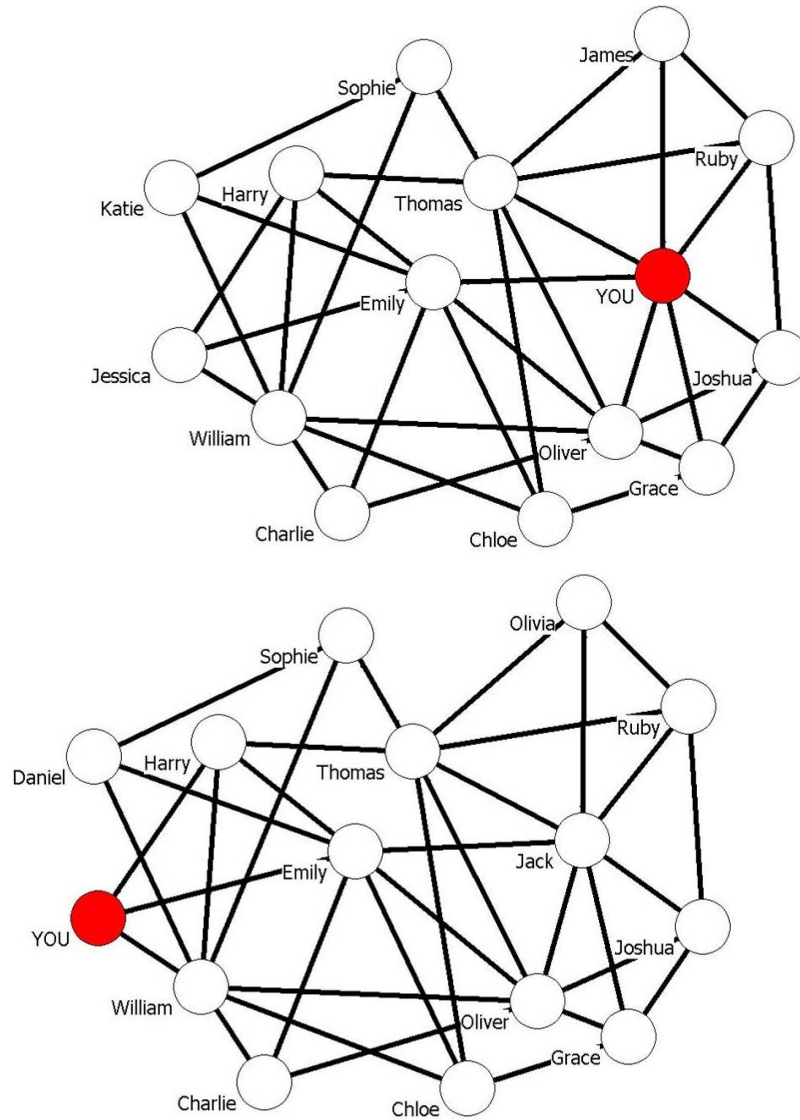


Figure 11: Network pictures shown to subjects in experiment 1. Top: Treatment 1 - High type with degree=7. Bottom: Treatment 2 - Low type with degree=3.

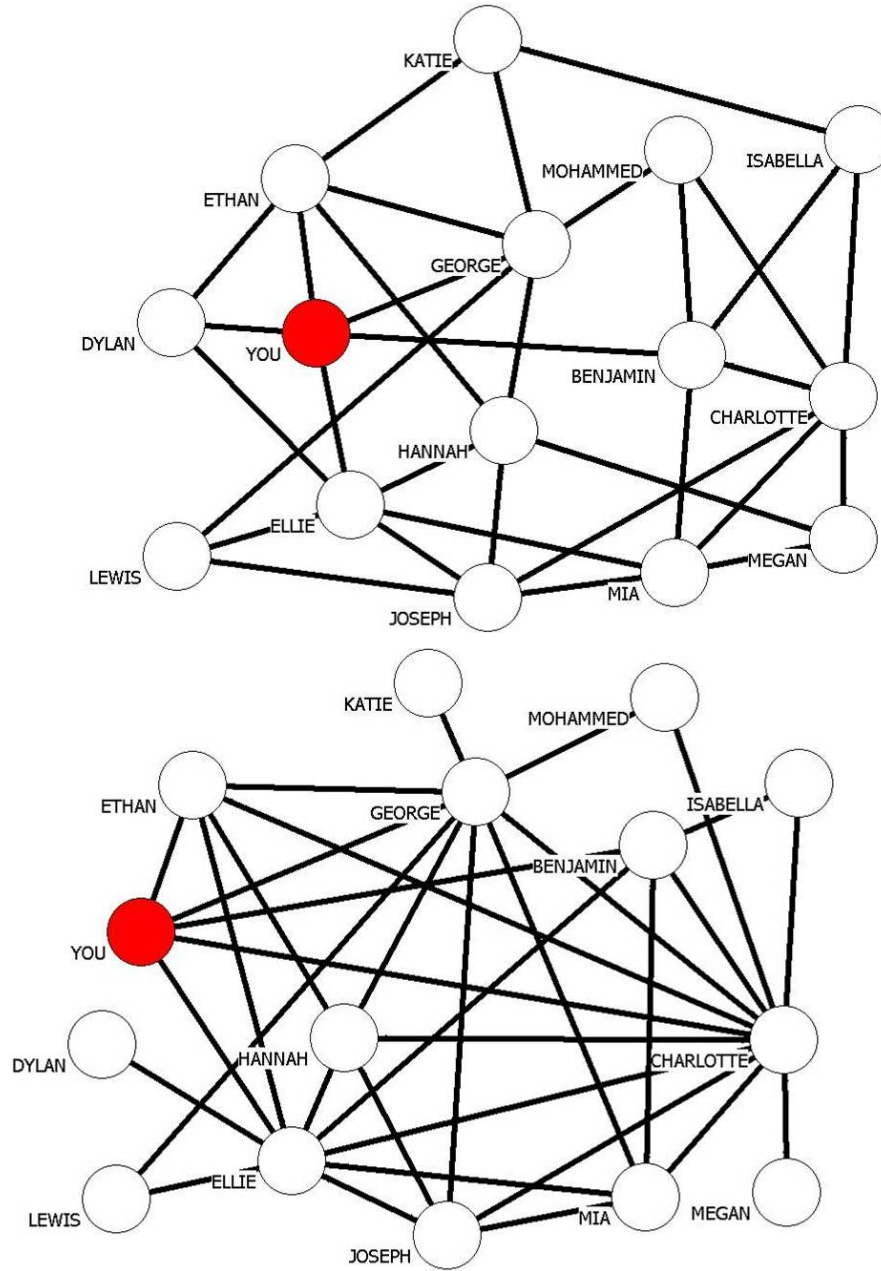


Figure 12: Network pictures shown to subjects in Treatment 1 of Experiment 2 (high type). Top: Original network shown in the first 30 seconds. Bottom: Mean-preserving spread of original network shown in the last 30 seconds.

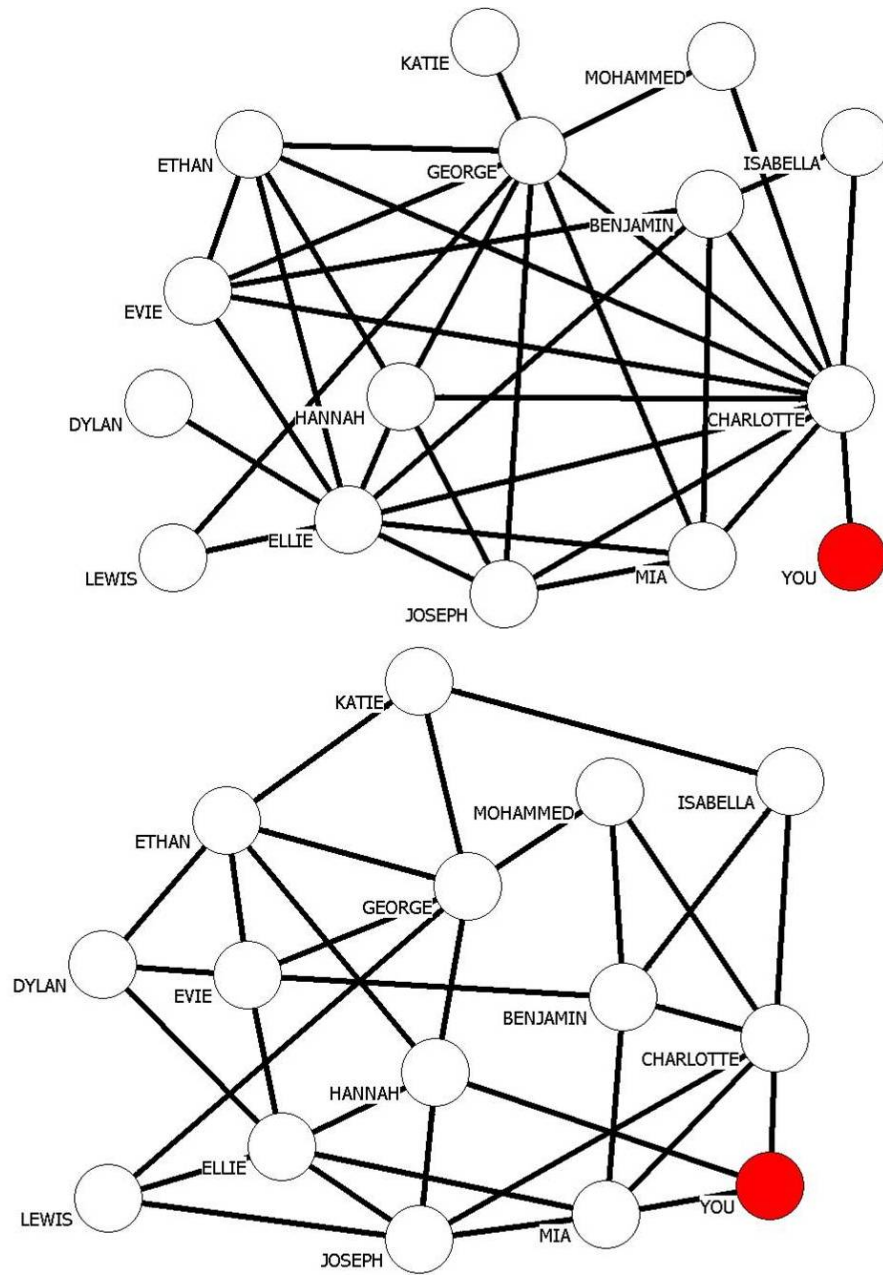


Figure 13: Network pictures shown to subjects in Treatment 2 of Experiment 2 (low type). Top: Mean-preserving spread of original network shown in the first 30 seconds. Bottom: Original network shown in the last 30 seconds.

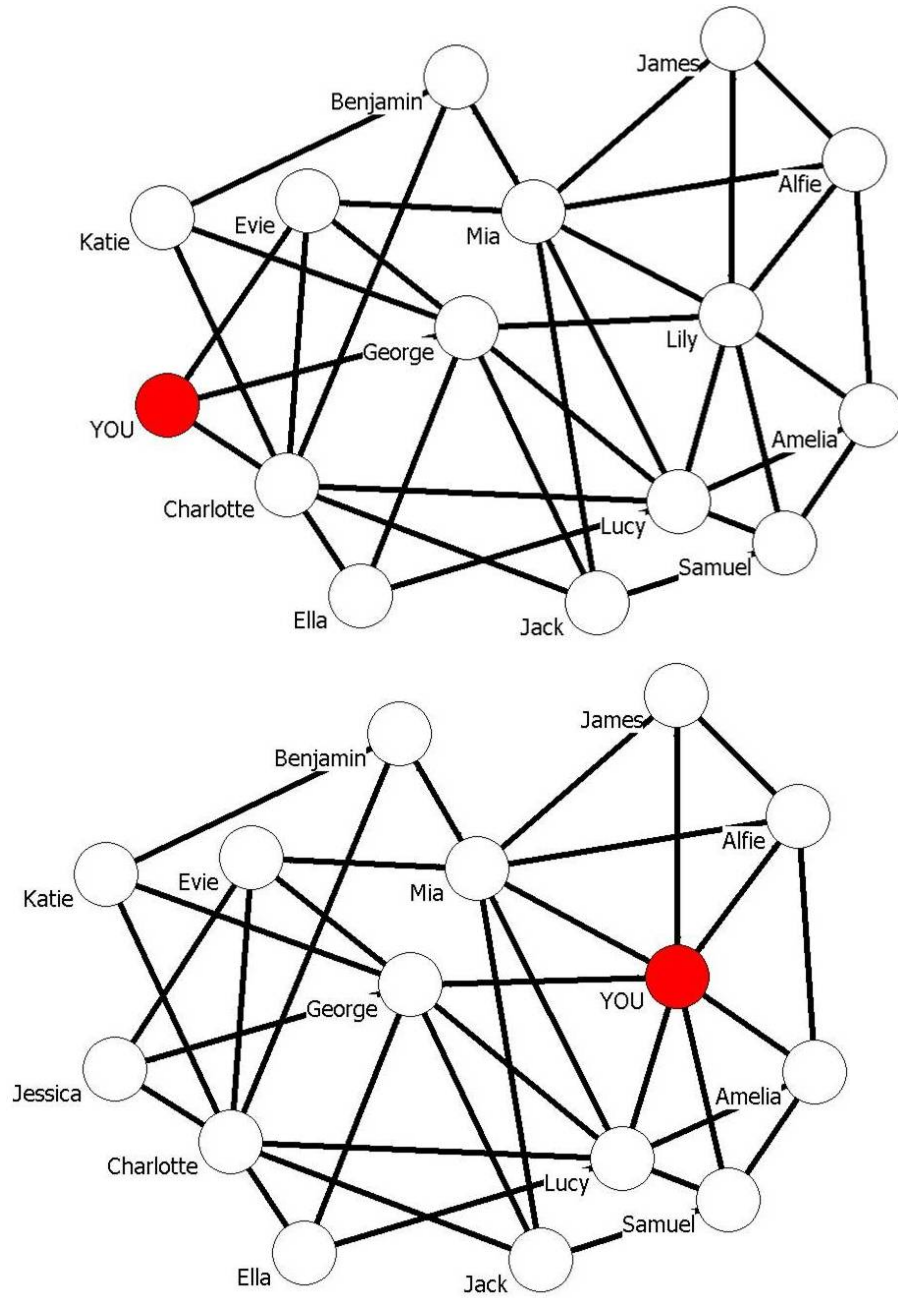


Figure 14: Network pictures shown to subjects in the pilot study. Top: Treatment 1 - Low type with degree=3. Bottom: Treatment 2 - High type with degree=7.

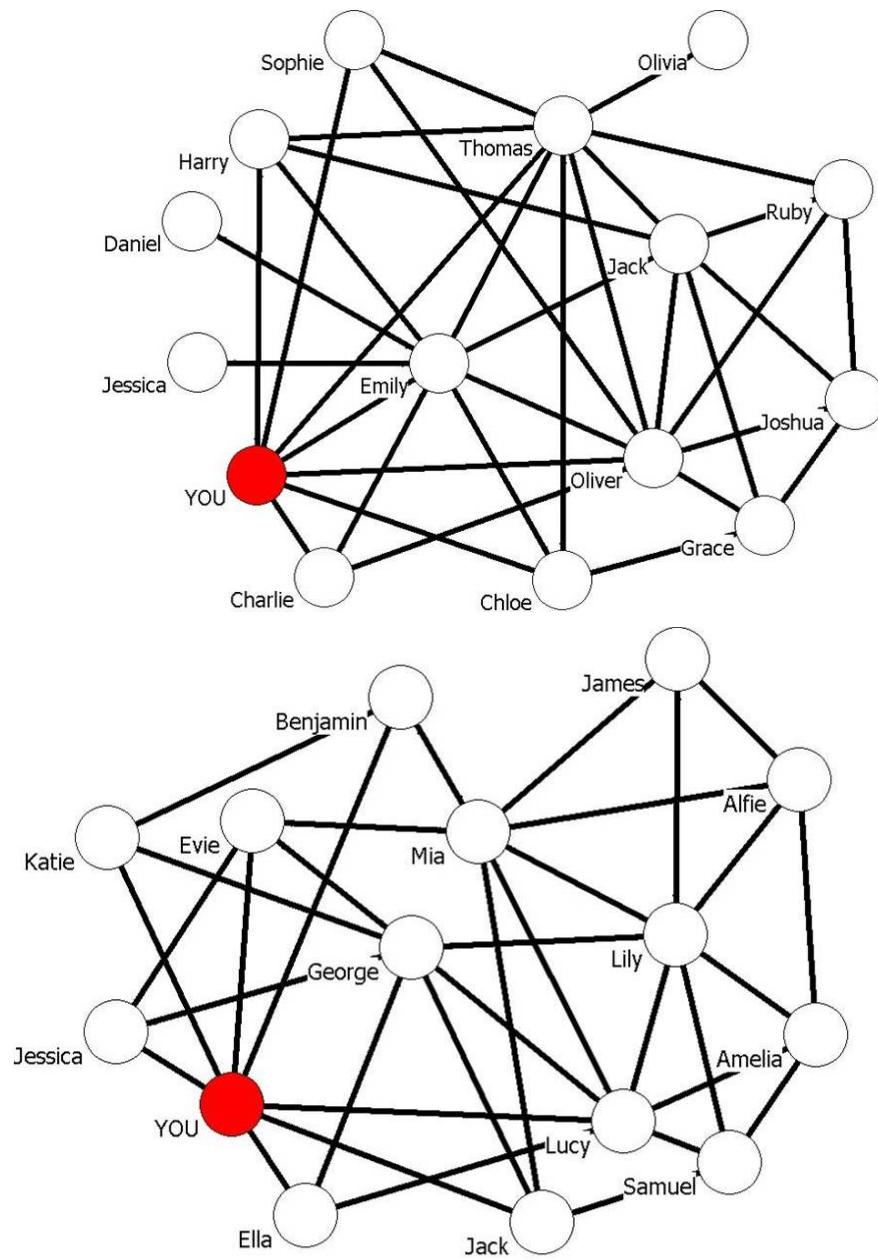


Figure 15: Top: network picture shown to subjects in Experiment 3. Bottom: network picture shown to subjects in Experiment 4.